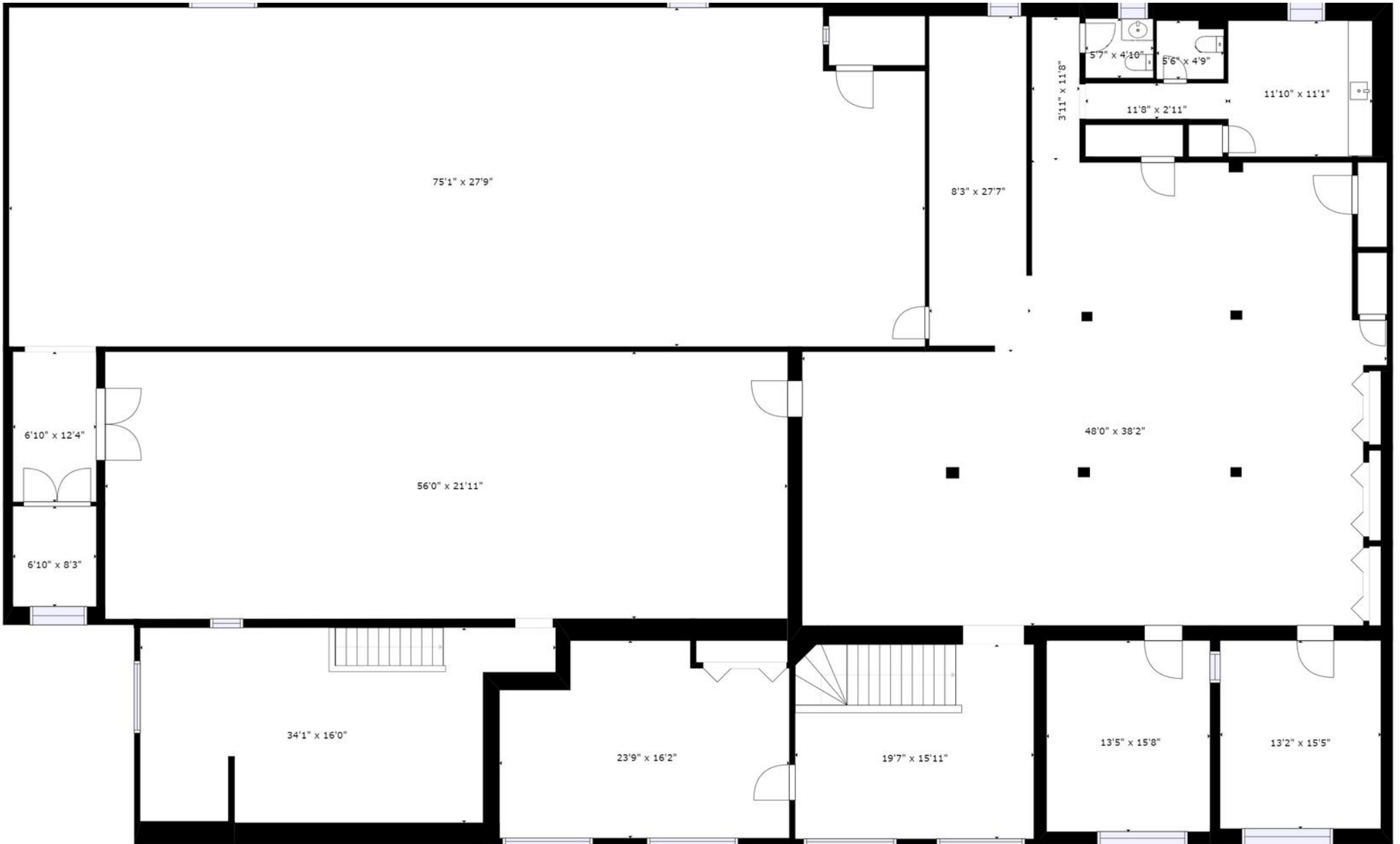


GROSS INTERNAL AREA
 FLOOR 1: 7083 sq. ft, FLOOR 2: 7365 sq. ft
 TOTAL: 14448 sq. ft
CYTES AND DIMENSIONS ARE APPROXIMATE. ACTUAL MAY VARY.



GROSS INTERNAL AREA
 FLOOR 1: 7083 sq. ft, FLOOR 2: 7365 sq. ft
 TOTAL: 14448 sq. ft

FIGURES AND DIMENSIONS ARE APPROXIMATE. ACTUAL MAY VARY.